

- - - New 3" Natural Gas Line
- Project Areas
- East March Point Wetland Mitigation Site

Source: NAIP Imagery (10/2013)

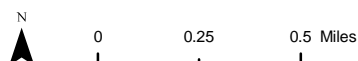


Figure 1
Vicinity Map
Clean Products Upgrade Project



Source: NAIP Imagery (10/2013)

Notes:

1. Contours shown are at 5' intervals
2. The proposed improvements will add approximately 18 acres of impervious surface. Impervious surface added at New Tanks Area and VCU (MVEC System) only.

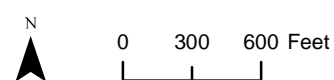
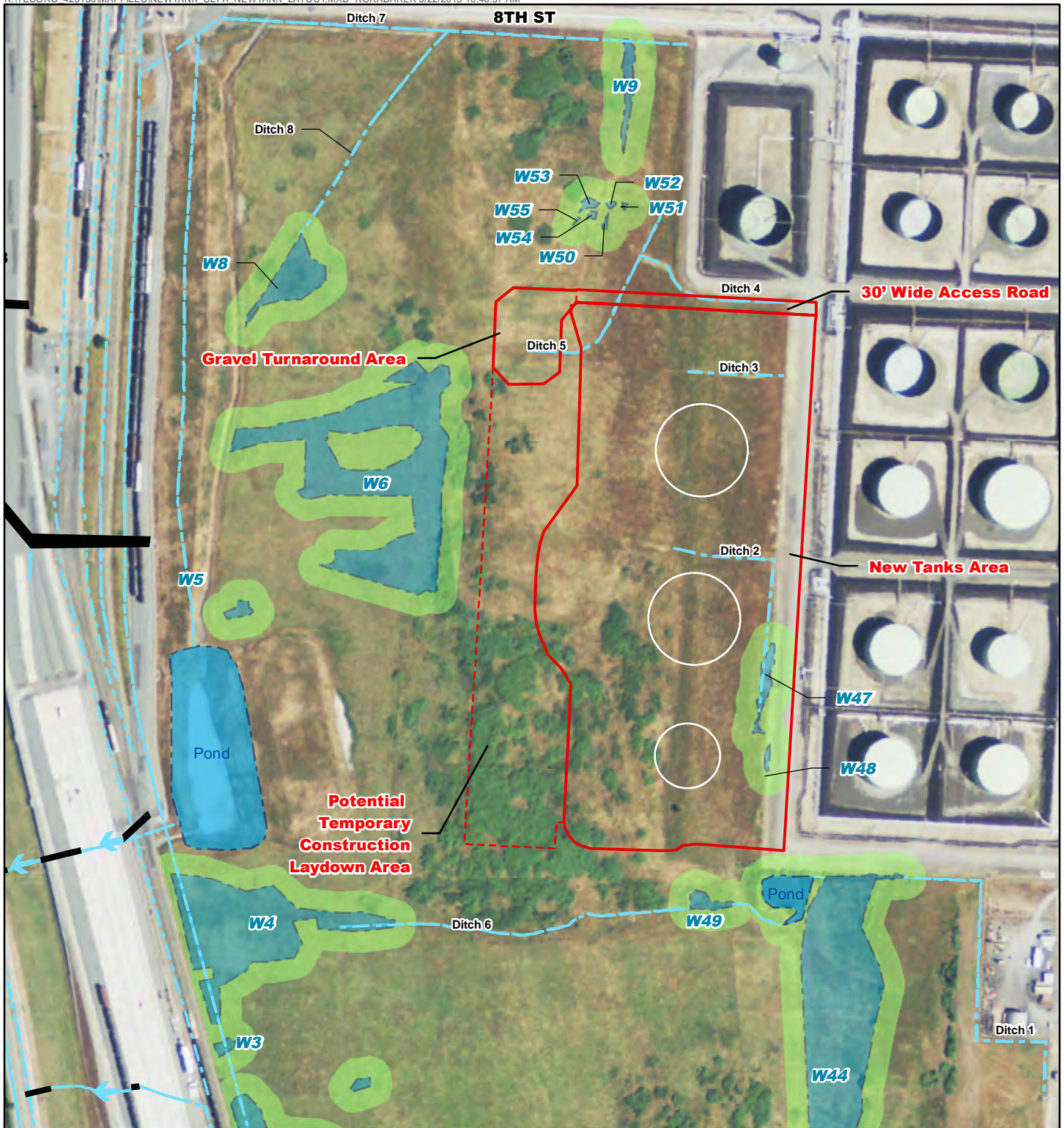


Figure 2
Project Overview and Topographic Map
Clean Products Upgrade Project



Source: NAIP Imagery (10/2013)



- Drainage Ditch
- Culvert
- Delineated and Approximate Wetlands
- Wetland Buffer (50ft, Category IV)
- Project Area

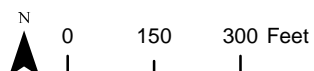


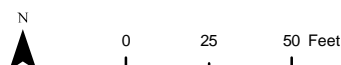
Figure 3
New Tanks Area Layout
Clean Products Upgrade Project



--- 3-inch Natural Gas Line

Project Area

Note: Dock Safety Unit (DSU) is part of the Marine Vapor Emission Control (MVEC) System



Source: Google (2015).

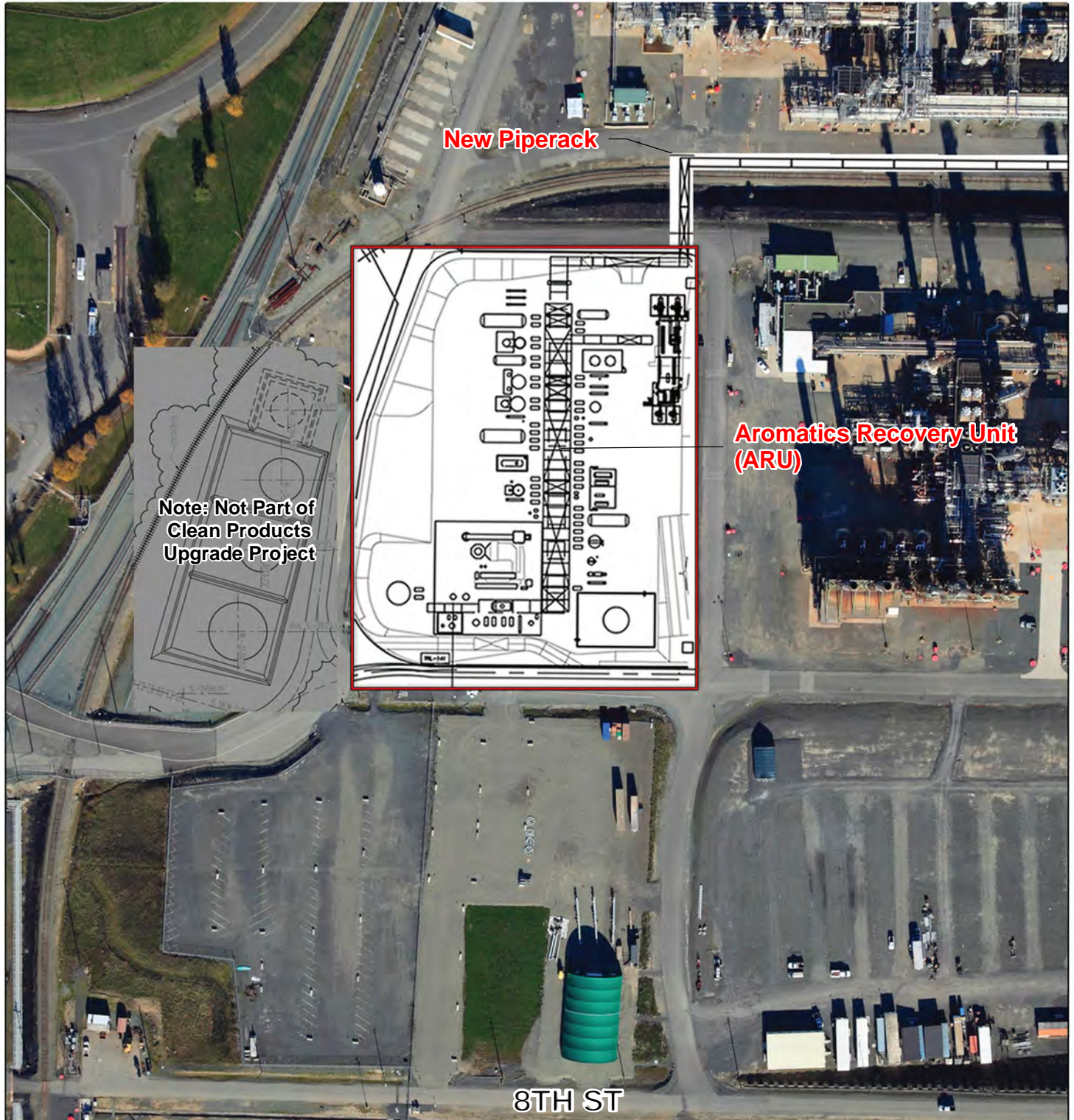
Figure 4
Dock Safety Unit (DSU)
Clean Products Upgrade Project



 Project Area



Figure 5
Isomerization (Isom) Unit and
Naphtha Hydrotreater (NHT) Expansion
Clean Products Upgrade Project



Project Area



Figure 6
Aromatics Recovery Unit (ARU)
Clean Products Upgrade Project



 Project Area

Note: Vapor Combustion Unit (VCU) is part of the Marine Vapor Emission Control (MVEC) System



Figure 7
Vapor Combustion Unit (VCU)
Clean Products Upgrade Project